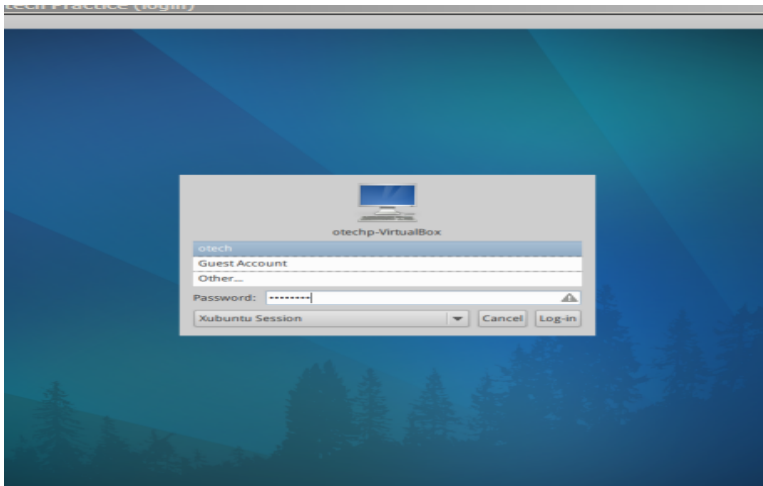


What will happen when I initially boot up my Otech system?

When you first boot the computer, you will encounter a login screen. The initial credentials have been set up for you as part of the Xubuntu installation. To login, make sure the user **otech** is selected. Your password is **password**. In order to secure your computer, you will need to change the password.



Article ID: 186

Last updated: 30 Nov, 2012

Revision: 5

Information Technology Services -> Otech -> What will happen when I initially boot up my Otech system?

<https://www2.owens.edu/faq/entry/186/>