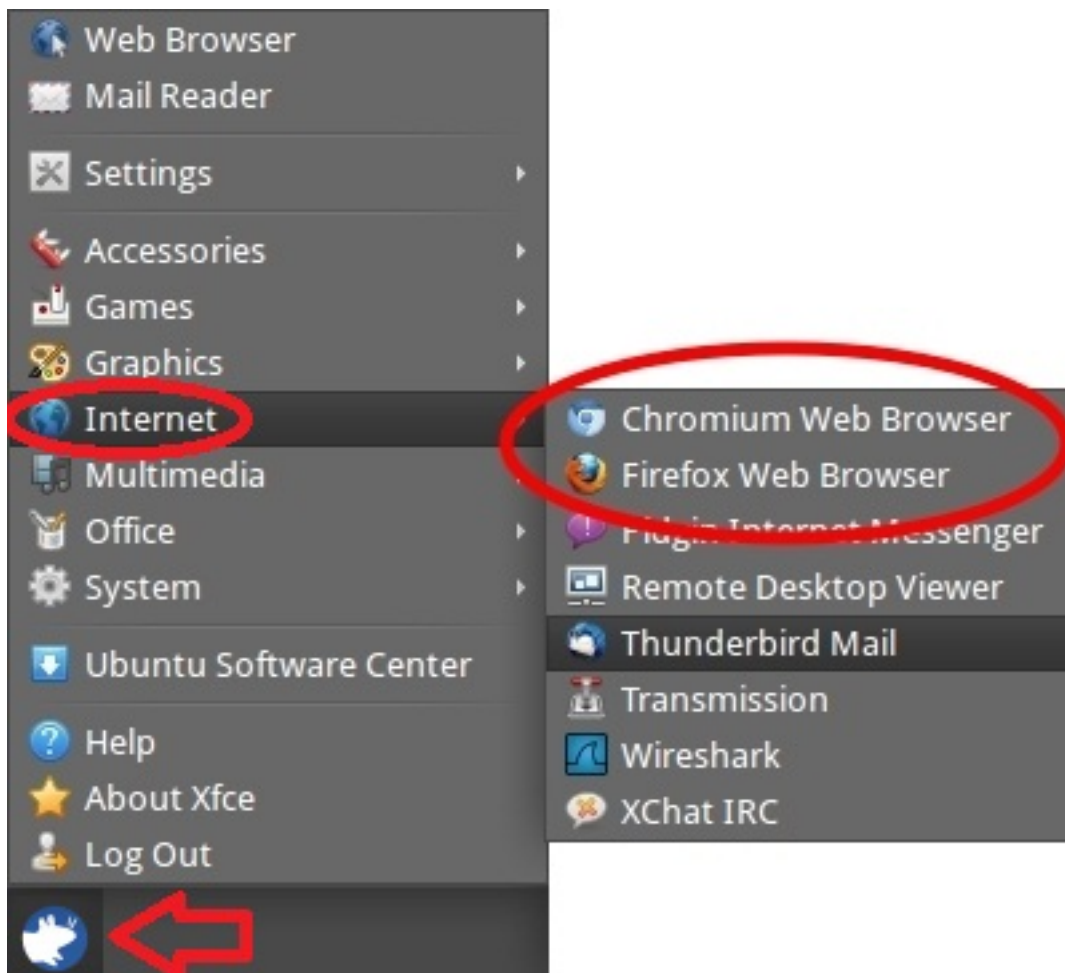


# How do I access the Internet from my Otech system?

1. Make sure you are signed up with an **Internet Provider**.
2. Plug in the **Network Cable**.
3. There are two web browsers already installed on the computer, **Mozilla Firefox** and **Chromium**. You can a) Click on the shortcuts located on the desktop or b) access them through the start menu.

To access Firefox or Chromium:

1. Click the **start button** in the lower left corner of the screen.
2. Mouse over **Internet** and then select either **Chromium** or **Firefox** (Mozilla).



Article ID: 181

Last updated: 30 Nov, 2012

Revision: 3

Information Technology Services -> Otech -> How do I access the Internet from my Otech system?

<https://www2.owens.edu/faq/entry/181/>